

# Application of the UM-SA12 in southern Africa

# Operational Aspects of the UM SA12 LAM

The SAWS run a regional version of the UM in-house

Operational on a SX-8 high performance computer

The domain covers the whole of southern Africa as well as surrounding oceans

The UM SA12 has been operational since October 2006.

# Operational Aspects of the UM SA12 LAM

## Configuration of UM

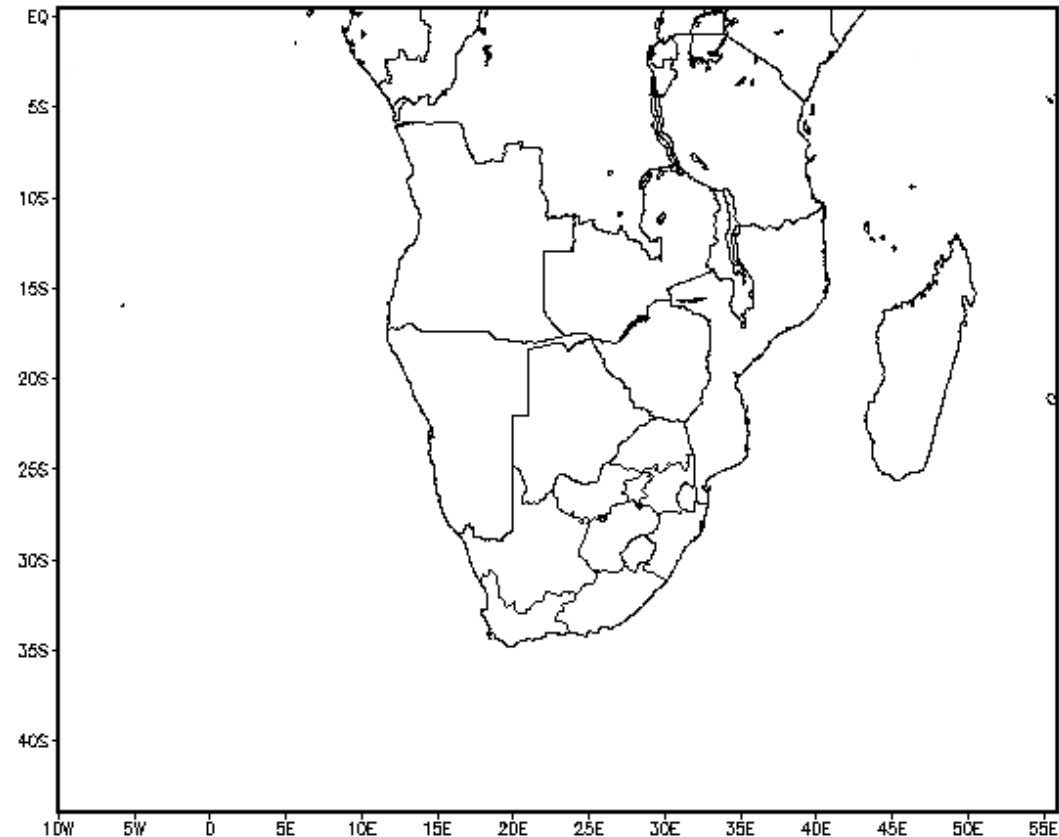
12km horizontal resolution

38 vertical levels

Domain:

20W-50E; 45S-0S (SADC)

Provides hourly numerical  
forecasts for up to two days  
ahead (48 hours).



# Operational Aspects of the UM SA12 LAM

- NEC sx8 single node (8 CPUs)
- 648 x 480 grid points
- 38 levels
- 128GB memory, 1.2TB disk-space
- Speed: 42 minutes per 24 hr forecast for SA12: 648x480L38
- 5 Operational runs daily

# Configurations of the UM SA LAM

## Unified Model Forecasts

[Cyclone Home](#) | [NWP Products](#) | [Research Projects](#) | [In-House Training](#) | [Publications](#) | [Presentations](#) | [University Notes](#) | [Verification](#) |

Unified model [Research runs](#)   
\*\*\*Status of model runs [HERE](#)\*\*\*

### [12km no-DA \(Xaana\) run](#)

- Updated: Once daily
- Available - **13:00 SAST**
- 12km Resolution
- No Data Assimilation
- Last update: 11 Nov 01:39
- Forecast: 11 Nov 00:00z to 13 Nov 00:00z
- Temperature Forecast Error: 11 Nov
- Day 1: [In Tx](#)
- Day 2: [In Tx](#)

### [12km version 7.3 \(Xaan6\)](#)

- Upgrade from v6.1 to v7.3
- Available - **05:00 SAST**
- 12km Resolution
- No Data Assimilation
- Last update: 12 Nov 04:07
- Forecast: 12 Nov 00:00z to 14 Nov 00:00z
- [New features](#)

### [12km DA \(Xaang\) run](#)

- Updated: Once daily
- Available - **09:00 SAST**
- 12km Resolution
- Continuous Data Assimilation
- Last update: 12 Nov 08:34
- Forecast: 12 Nov 00:00z to 14 Nov 00:00z
- Temperature Forecast Error: 11 Nov
- Day 1: [In Tx](#)
- Day 2: [In Tx](#)

### [Xaanj run](#)

- Updated: Once daily
- Available - 20:00 SAST
- 12km Resolution
- Intermittent Data Assimilation
- Last update: 27 Nov 09:17
- Forecast: 27 Nov 12:00z to 29 Nov 12:00z

### [15km \(Xaaha\) run](#)

- Updated: Once daily
- Available - 01:30 SAST
- 15km Resolution (only over SA)
- No Data Assimilation
- Last update: 12 Nov 08:48
- Forecast: 12 Nov 00:00z to 14 Nov 00:00z
- Temperature Forecast Error: 11 Nov
- Day 1: [In Tx](#)

### [15km version 7.3 \(Xaan1\)](#)

- Updated: Once daily
- Available - **09:00 SAST**
- 15km Resolution (only over SA)
- No Data Assimilation
- Last update: 12 Nov 08:35
- Forecast: 12 Nov 00:00z to 14 Nov 00:00z

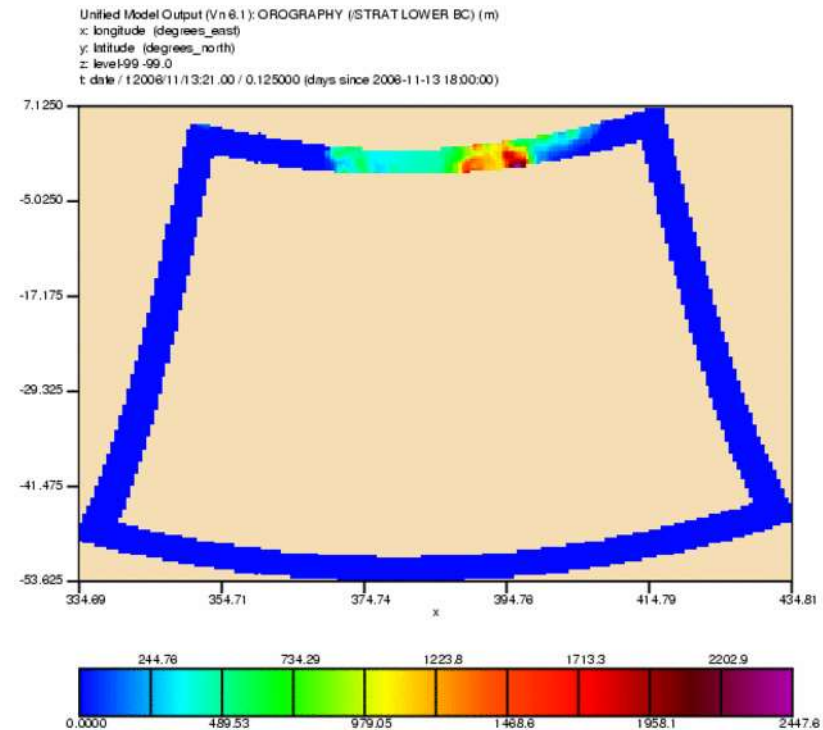
**\* 4KM MODEL : NOT VERIFIED \***

### [Saanh run](#)

- Updated: Once daily
- Available - 01:30 SAST
- 4km Resolution (only over SA)
- Intermittent Data Assimilation
- Last update: 17 Jan 09:27
- Forecast: 16 Jan 10:00z to 18 Jan 00:00z

# Configurations of the UM SA LAM

- UM SA12: main model run
- Initialised daily at 00UTC
- Initial conditions & lateral boundary conditions from Global UM
- 18 UTC 6hr forecast
- 48 hr forecast
- Updates daily ~ 5:00 SAST (03 UTC)

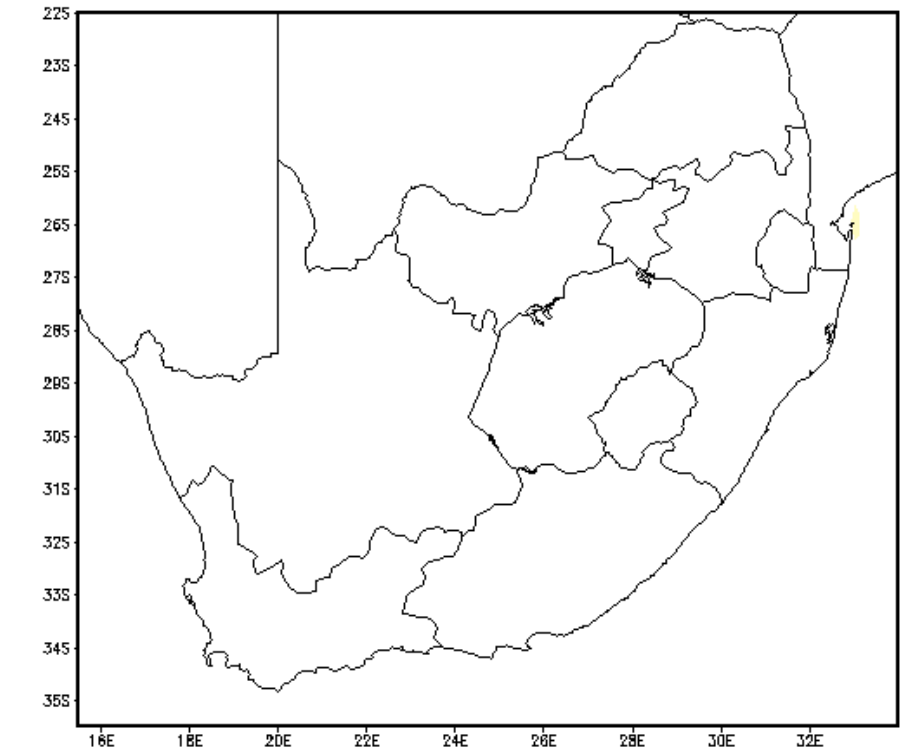


# Configurations of the UM SA LAM

- UM SA12 DA: continuous data assimilation
- Same domain and resolution as UM SA12
- 48 hr forecast initialised daily at 00UTC
- Ops and background error files from Global UM
- Updates daily ~ 9:00 SAST (07 UTC)

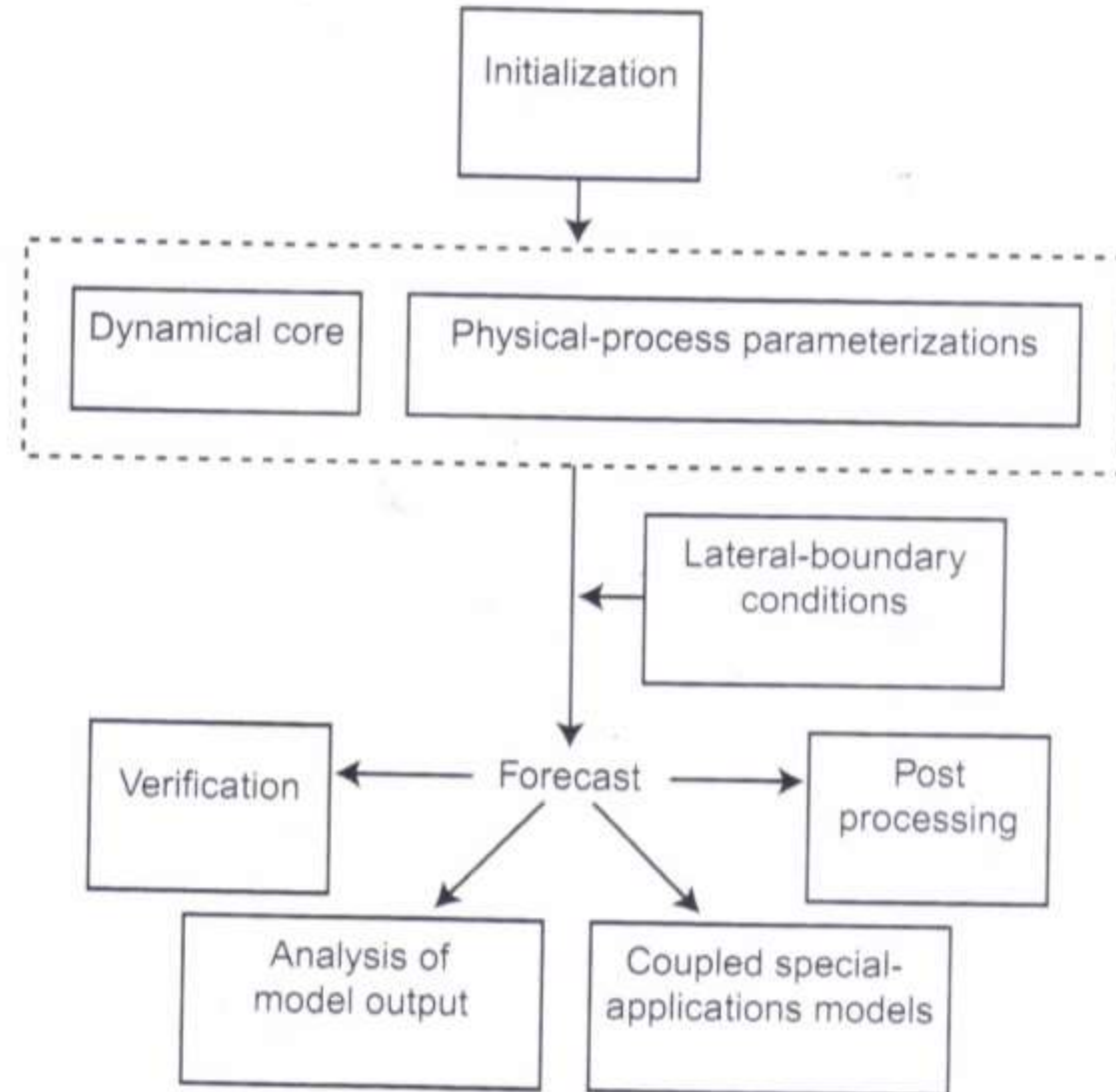
# Configurations of the UM SA LAM

- UM SA15: 3 model runs
- Horizontal resolution of 15 km
- Only covers the South African domain
- 48 hr forecast initialised daily at 00UTC
  1. Old version of UM code (v 6.9)
  2. Old version but with different cumulus scheme
  3. Upgrade version of UM code (v 7.3)
- Updates daily ~ 1:00, 1:30 & 8:30 SAST respectively





# Components of the UM SA LAM



# Applications of the UM SA LAM

- Regional responsibilities (RSMC / SWFDP)
- Training ([www.eumetrain.org](http://www.eumetrain.org))
- Flash Flood Guidance
- Client specific forecasts (i.e. ESKOM)
- Regional multi-model ensemble probability forecasts